

A BEGINNER'S GUIDE TO CHESS

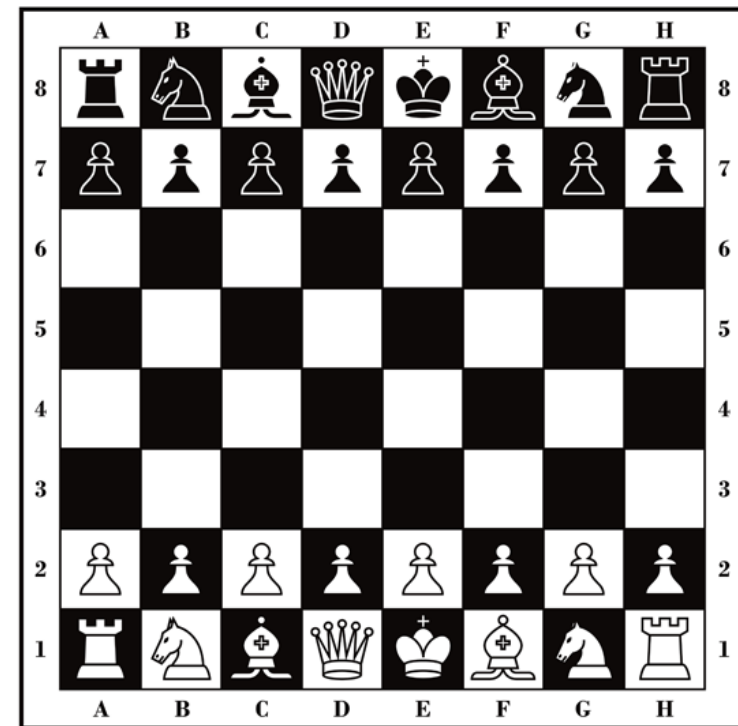
THE BASICS

So, you've just started your chess journey, but you wonder, "Where do I start?". Well, I've decided to compile some of the most helpful tips and guides to aid your chess learning. If you are yet to learn how to move your pieces, or how to finish a match, here are some simple guides on just that, however if you already understand that, you can continue to the next slide. [Links to helpful sites will be displayed in this shade of purple.](#)

[Chess Rules: a Step-by-Step Guide for Beginners \(takelessons.com\)](https://takelessons.com/chess-rules-a-step-by-step-guide-for-beginners)

[How to Move the Pieces - Chess Lessons - Chess.com](https://chess.com/how-to-move-the-pieces)

A chess board, complete with coordinates and the layout of the pieces.



COMMON OPENINGS

Ok, you've learnt how to move your pieces and how to end a game, now you are ready to learn how to move your pieces **EFFECTIVELY**. Again, if you feel comfortable with your openings, then you can feel free to continue to the next section on slide

...



In a game of chess, the white pieces move first, meaning white will always be able to start with an opening of their choosing. This means black will either have to counter white's opening or proceed with their own. From my experience, it is best to learn 1 or 2 beginner openings, and as you progress steadily learn more complex ones too.

Here are some of the openings I have seen and used in previous matches, and that I believe are fairly easy to pick up. Each opening is explained, along with counters from black and possible variants and developments. Of course, you can use the links provided, or find some openings of your own to use.



[London System - Chess Openings - Chess.com](#)

The London System is a very simple, 4 move opening that can be developed into a great midgame and endgame.

[Queen's Gambit - Chess Openings - Chess.com](#)

The Queen's Gambit is also a simple opening that leads into a strategic midgame, using pawns and knights to control the centre.

[Scotch Game - Chess Openings - Chess.com](#)

The Scotch Game is an opening that can be easily built upon for white and is a hard-pressed defence for black.

TIPS AND TRICKS

Ok, so we've covered some basic openings, now it's time to move on towards some tips and tricks that I believe will certainly help you in many of your future matches.

First up, trading pieces. If in a match, you have captured significantly more pieces than your opponent, you may want to see if you can "trade" pieces. This would mean capturing a high value piece using one of your own. Obviously in most cases your opponent would take this piece too, however it may be worth it to be able to reduce the number of pieces they have, whilst still maintaining your piece difference and control over the board.

Secondly, you're going to want to learn effective tactics/traps to use, as well as endgame mechanics. For the prior, having an understanding of the current board, as well as the possibilities of potential "traps" (perhaps forcing a piece to move to a more open space) will help you gain a lead, and also prowess over your opponent.

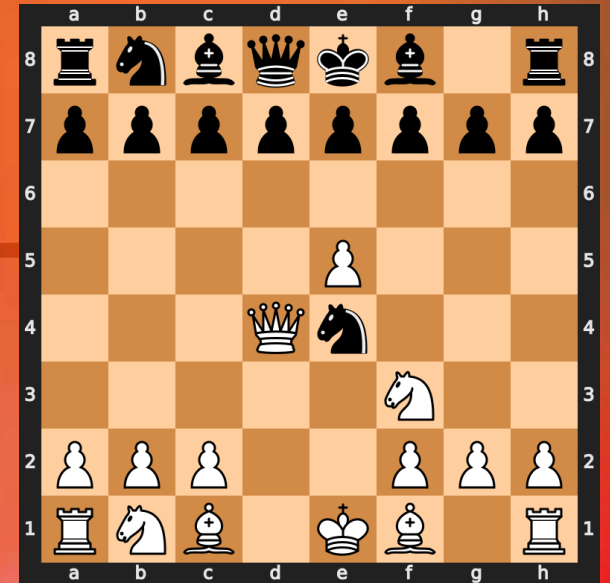
For the latter, studying the endgame will help you to understand which pieces you are effective at using, and those you aren't. Through this, you can learn how to adapt to almost any outcome or move made by your opponent.

SPECIAL MOVES

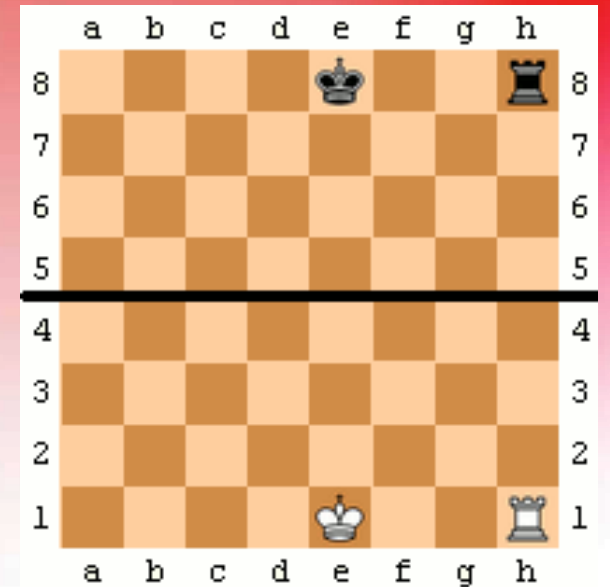
Now, I am going to cover some special moves you could also add to your games that can provide even more tactical fun to your growing arsenal. These "special moves" are some of my favourites to use, and they are: the En Passant, "Castling", and pawn promotion. I have provided a link- for all 3 if you wish to learn about them.

[Special Chess Moves | Chess Terms - Chess.com](#)

The En Passant is a special move utilized by pawns, French for "the passing". When your opponent moves a pawn 2 spaces for its first move so it is next to one of your own pawns, you can capture it as such. It is demonstrated in this short GIF..



Castling is the slang name for when the path from a king to a rook is clear, (and neither pieces have moved!), and the king is able to move two spaces towards the rook, and the rook is dragged to the side of the king from the way it came. It is demonstrated in the bottom GIF.



Pawn promotion is where if a pawn is able to travel to the other side of the board, it can "promote" to either a new or another one of the following: a Queen, Knight, Bishop or Rook.

THE END

Well done! You've learnt all you need to know as a beginner in chess, and you can successfully say you play chess! Of course, if you want to further your chess journey, you can look for some more openings and tactics to use, or intermediate guides to read.

Thanks for reading!